



Stoneacre  
Properties



## 38 Elsham Terrace

Burley, Leeds, LS4 2RB

Asking Price £150,000





# 38 Elsham Terrace

Burley, Leeds, LS4 2RB

Asking Price £150,000



## LOUNGE

Bay window, stripped floorboards and radiator.

## KITCHEN

Double glazed windows, tiled floor, range of wall and base units, stainless steel sink and drainer, gas hob, oven, extractor, plumbing for washing machine and space for fridge freezer.

## BATHROOM

Suite comprising corner bath, W.C and wash hand basin.

## MASTER BEDROOM

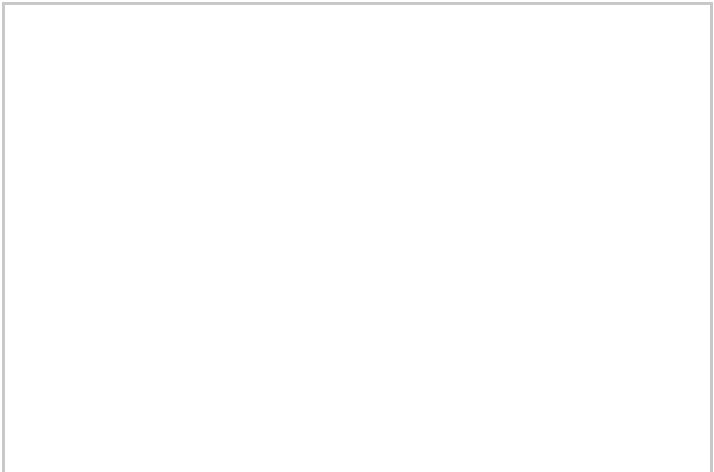
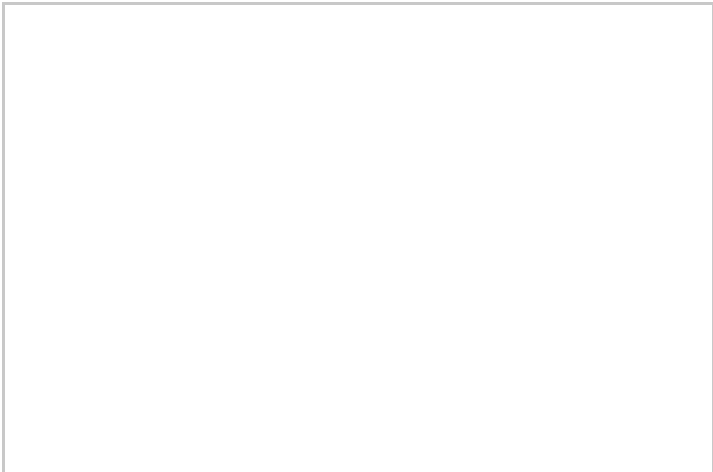
Double glazed window, painted floorboards, radiator and wash had basin.

## BEDROOM TWO

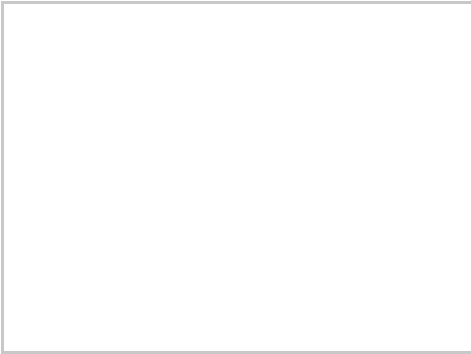
Velux window, radiator and wash hand basin.

## EXTERNAL

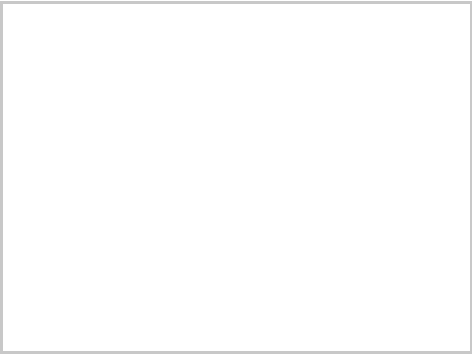
There is a front courtyard and on street parking available.



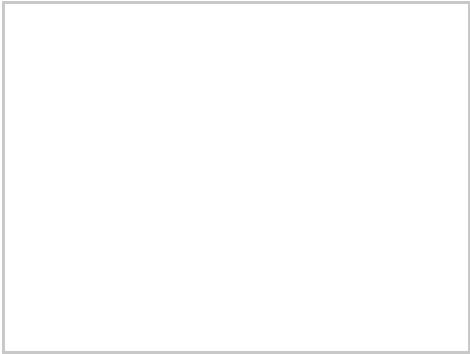
Road Map



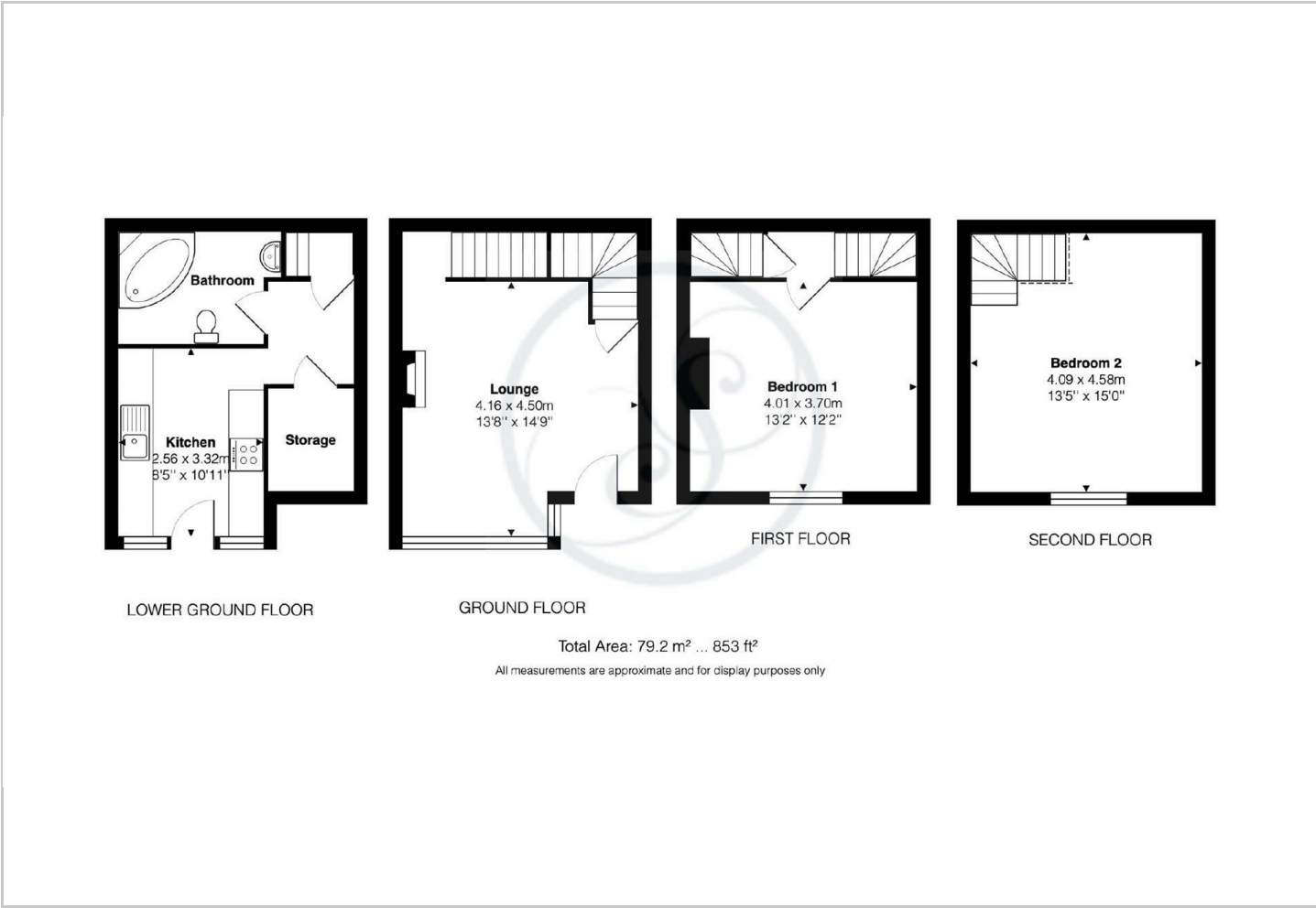
Hybrid Map



Terrain Map



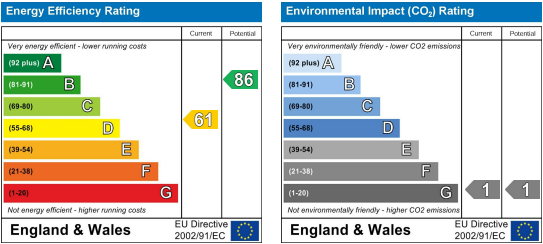
Floor Plan



Viewing

Please contact our Chapel Allerton Sales Office on 0113 237 0999 if you wish to arrange a viewing appointment for this property or require further information.

Energy Efficiency Graph



These particulars, whilst believed to be accurate are set out as a general outline only for guidance and do not constitute any part of an offer or contract. Intending purchasers should not rely on them as statements of representation of fact, but must satisfy themselves by inspection or otherwise as to their accuracy. No person in this firms employment has the authority to make or give any representation or warranty in respect of the property.